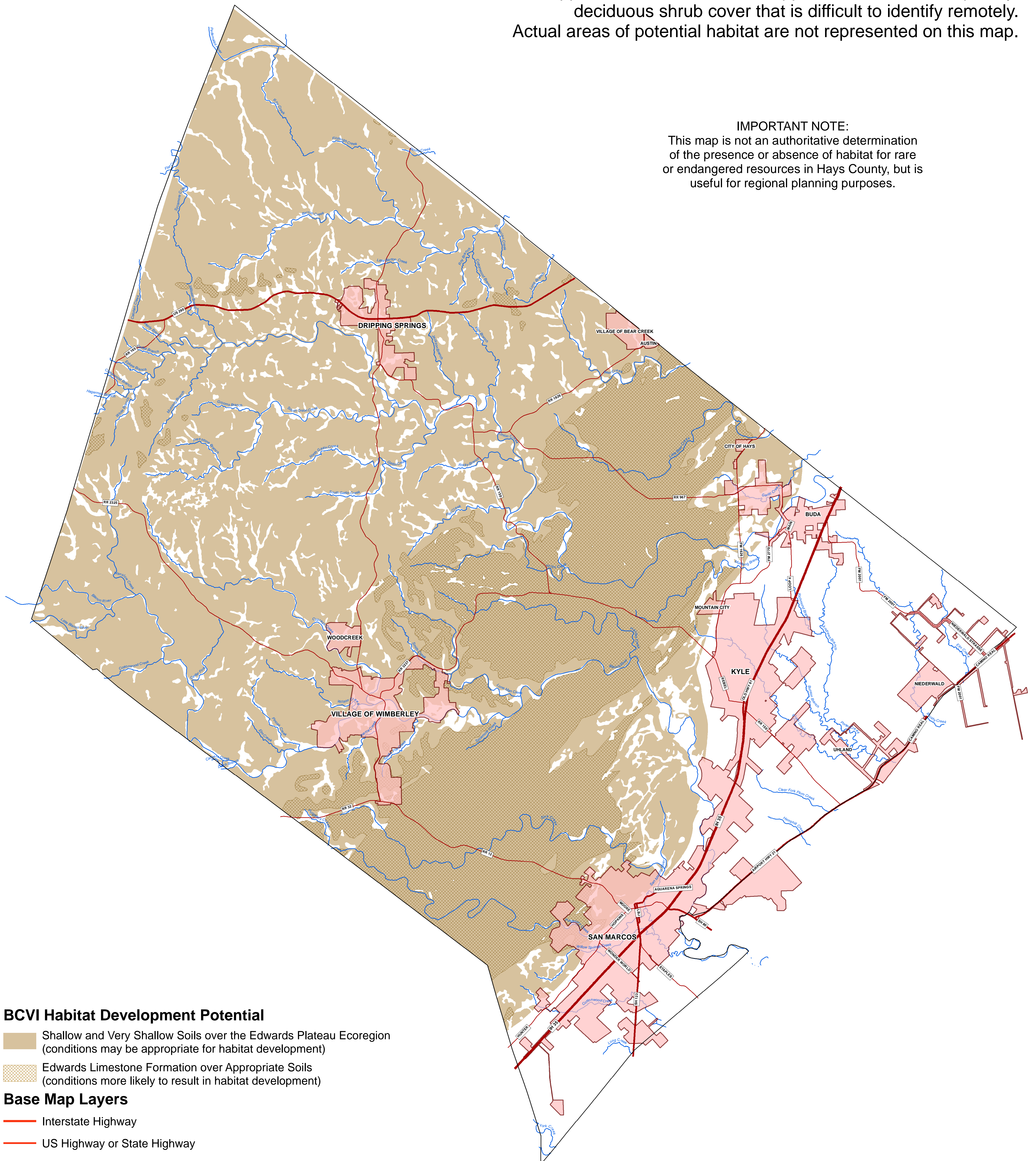


Black-capped Vireo Habitat Development Potential in Hays County, Texas

Map shows landscape features that are conducive to the development of black-capped vireo habitat. Black-capped vireos utilize low, patchy, deciduous shrub cover that is difficult to identify remotely. Actual areas of potential habitat are not represented on this map.

IMPORTANT NOTE:
This map is not an authoritative determination of the presence or absence of habitat for rare or endangered resources in Hays County, but is useful for regional planning purposes.



BCVI Habitat Development Potential

- Shallow and Very Shallow Soils over the Edwards Plateau Ecoregion (conditions may be appropriate for habitat development)
- Edwards Limestone Formation over Appropriate Soils (conditions more likely to result in habitat development)

Base Map Layers

- Interstate Highway
- US Highway or State Highway
- Ranch-to-Market or Farm-to-Market
- County Road
- City Limits
- Named Streams

